

# OFF THE VINE

## California Wine grape harvest shows signs of shortage

There are times in agriculture when too little crop can mean a good thing for farmers and food producers but discouraging news for consumers. This is where California's wine industry is now, according to a recent report by researchers at UC Davis' Graduate School of Management.

After California's wine industry struggled to deal with a glut of grapes in 2003-04, a number of

vineyards and growers went out of business because they had too much of a good thing. Now there are signs of a shortage of wine grapes.

Blame it on the weather, say researchers. Last spring northern California vineyards struggled through hard rain and a freeze. That, in turn, meant that the weather wasn't conducive for the plants to get a good start on growing this season's grapes.

Now, as harvest begins, farmers are finding that the grapes are coming in a bit light, said Robert Smiley, director of wine studies at UC Davis.

"Depending on who's counting and which varietal you're talking about, you're seeing [the crop] short about 20% to 30% statewide," said Smiley, dean and professor of management, emeritus, at Davis' graduate school of management

Continued on page 3

*WIP*  
Winegrape Inspection Program, Inc.

Volume 1, Issue 8

SEP/OCT 2011

*Safety Savvy* 2

*Recipe of the Month* 3

*Grape Facts* 3

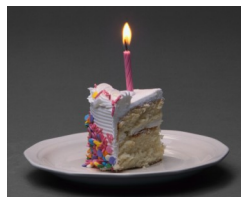
*Reminders* 3

*Winegrape Harvest* 3  
(continued from 1)

*Behind the Scenes* 4



<i>Melissa Bowman</i>	<i>Oct. 09</i>	<i>Terry Hansen-Cain</i>	<i>Nov. 03</i>	<i>Lorraine Stanfill</i>	<i>Nov. 22</i>
<i>Michael Dixon</i>	<i>Oct. 11</i>	<i>Korey Davis</i>	<i>Nov. 06</i>	<i>Rafael Martinez</i>	<i>Nov. 22</i>
<i>Sylvia Gonzalez</i>	<i>Oct 19</i>	<i>Esmeralda Cruz</i>	<i>Nov. 11</i>	<i>Melissa Holley</i>	<i>Nov. 26</i>
<i>Joe Maloney</i>	<i>Oct. 19</i>	<i>Juana Zambrano</i>	<i>Nov. 15</i>	<i>Mark Randolph</i>	<i>Nov. 30</i>
<i>Robert Smith</i>	<i>Oct. 25</i>	<i>Wayne Acenas</i>	<i>Nov. 17</i>		
<i>John Baker</i>	<i>Nov. 01</i>	<i>Daniel Rhoades</i>	<i>Nov. 17</i>		
		<i>Juana Torres</i>	<i>Nov. 18</i>		
		<i>Ida Alvarado</i>	<i>Nov. 22</i>		



  
**Winegrape Inspection Program, Inc.**

OPERATIONS OFFICE  
619 Woodworth Avenue  
Suite 100  
Clovis, CA 93612

Phone: 559-323-0969  
Fax: 866-233-3097

E-mail: [beubanks@winegrapeinspection.com](mailto:beubanks@winegrapeinspection.com)

*Serving California's Wine  
Industry Since 1939*

**We're on the  
Web!  
[WWW.CWIAB.ORG](http://WWW.CWIAB.ORG)**

*During the seasonal harvest it is not uncommon for over 2 million tons of grapes to be crushed and processed. Many times the sales or the growing contract between growers and vintners stipulate that a winery may deduct payment from a grower based on the amount of soluble solids, defect, or material other than grapes found in the load. Under these conditions mandatory third party inspection is required.*

*The goal of the Winegrape Inspection Program is to provide the wine industry an efficient, cost effective third party inspection service that will make uniform determinations and certifications of soluble solids, material other than grapes and defects in loads of grapes.*

*WIP, Inc operates three district offices within two regions. We hire and train as many employees as necessary to adequately carry out the request for inspection.*

## SAFETY SAVVY

SAFE—STAYING ACCIDENT FREE EVERYWHERE

### HAZARDOUS MATERIALS

Hazardous Materials are all around us at work and at home. Just open your kitchen cabinets at home or your storage cabinets at work and more than likely, you will see items that are considered hazardous by OSHA.

Examples of Hazardous Household Materials are: cleansers, bleach and medicines.

Did you know the average household contains between 3 & 10 gallons of materials that are classified as hazardous?



According to OSHA, a hazardous Material is a chemical mixture that is toxic, an irritant, a corrosive, a strong oxidizer, a strong sensitizer, combustible, flammable, extremely

flammable, dangerously reactive, pressure generating, or that otherwise may cause substantial personal injury or substantial illness during or as a result of any customary or reasonable foreseeable handling or use.

#### SPECIAL RULES APPLY IN WORK AROUND

#### HAZARDOUS SUBSTANCES:

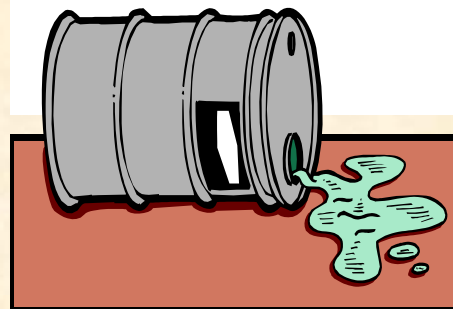
Employers who use any substance listed as a hazardous substance in Section 339 of Title 8 of the California Code of Regulations, must provide employees with information on the contents on Material Safety Data Sheets (MSDS), or equivalent information about the substance that trains employees to use the substance safely.

WIP, Inc. has this information listed on each posting board at all worksites. A Material Safety Data Sheet on each hazardous substance in the workplace is available and lists the possible effects from exposure to an employee. It

also lists the hazard rating, symptoms of exposure, first aid information, as well as, handling & storage information. MSDS lists the emergency fire fighting, chemical and toxicological information.

It is a good idea to take a look at this valuable information, you never know when you may need to use it... to help yourself or a coworker.

**REMEMBER:  
NEVER GAMBLE WITH  
HAZARDOUS  
MATERIALS!**



Continued from page 1:

“Going forward, that means consumers will likely see fewer wine discounts” on California wines because of the shortage in the crop, Smiley said. “If you don’t have enough product to meet demand, why cut price? You’re going to see the industry’s pricing tighten up.”

-- P.J. Huffstutter

Copied from: *The LA Times September 21, 2011*



Our Safety Drawing Winners for the First Aid Kits are:

Northern Region

Frankie King

Southern Region

Adrian Nieblas

**CONGRATULATIONS !!!**

# Recipe of the Month

By: Lorraine Stanfill

## 5 Minute Fudge

- 1 12 oz. pkg. Chocolate Chips
- 1 12 oz. pkg. Butterscotch Chips
- 1 14 oz. can Condensed Milk
- 1 7 oz. jar Marshmallow Crème
- 1 12 oz. pkg. Large Marshmallows
- 1 tsp. Vanilla
- 1 cup Chopped Nuts

Melt the chips over Medium heat. When they are melted and smooth add Vanilla and Condensed Milk. Cream together, then add Marshmallow Crème. Stir until creamed together. Next, add the chopped Nuts and large Marshmallows. While still hot, pour into a square baking dish and refrigerate until hard.



*Happiness  
Is Eating  
Fudge*



- **Sign your time sheets on last work day of the week.**
- **Take your 10 minute breaks.**
- **Inventory due on last Friday of each month.**
- **Drink plenty of water during high temperatures.**
- **Layer clothing to adjust to changing temperatures.**

## GRAPE FACTS

- ◆ **There are 10,000 winegrape varieties worldwide.**
- ◆ **Grapes contain about 80% water.**
- ◆ **Grapes are one of the only three fruits native to North America, together with blueberries, and cranberries.**
- ◆ **In the USA, the grape industry gives work to 1.1 million people, and the whole industry contributes about \$162 billion each year to the US economy.**
- ◆ **Red wines contain more antioxidants and resveratrol than white wines.**

